

January, 2009

The best selling model of BIXOLON printers

BIXOLON Thermal receipt printer

SRP-350



BIXOLON®

Introduction

The best selling model of BIXOLON printers, SRP-350



Look no further for thermal printing on 80mm wide paper, the BIXOLON SRP-350 thermal receipt is all you need.

Benefiting from Windows and OPOS drivers the BIXOLON SRP-350 thermal receipt printer is easy to integrate to any system. Fast speed and reliability, you can expect from a leading manufacturer.

The SRP-350 thermal receipt printer offers simplicity for the operator with “drop in and print” paper loading and ease of connectivity with interchangeable interfaces and industry standard drivers. The modern design and small footprint enhance any environment.

Product Overview

- **The best selling model of BIXOLON printers**
- **Fast 150mm/s print speed**
- **Drop and print paper loading ideal for hectic environments**
- **Drivers are available for Windows 95/98/ME/NT4.0/XP/2003 server, OPOS and JPOS**
- **Various interface cards (RS-232C, RS-485, Parallel, USB, USB+Serial, 10/100 base-T, Bluetooth)**
- **Barcode printing**
- **Page mode printing**
- **Easy customization by software program**
- **NV Memory for Bitmap Data Storage**
- **Convenient paper jam clearance**
- **4KB Data Buffer**
- **Small Footprint & Ergonomic Design**
- **Cash Drawer**

Application to



Retail
-Coupon and Receipt printing



Hospitality
-Pubs, Restaurant,
Accommodation service
receipt printing



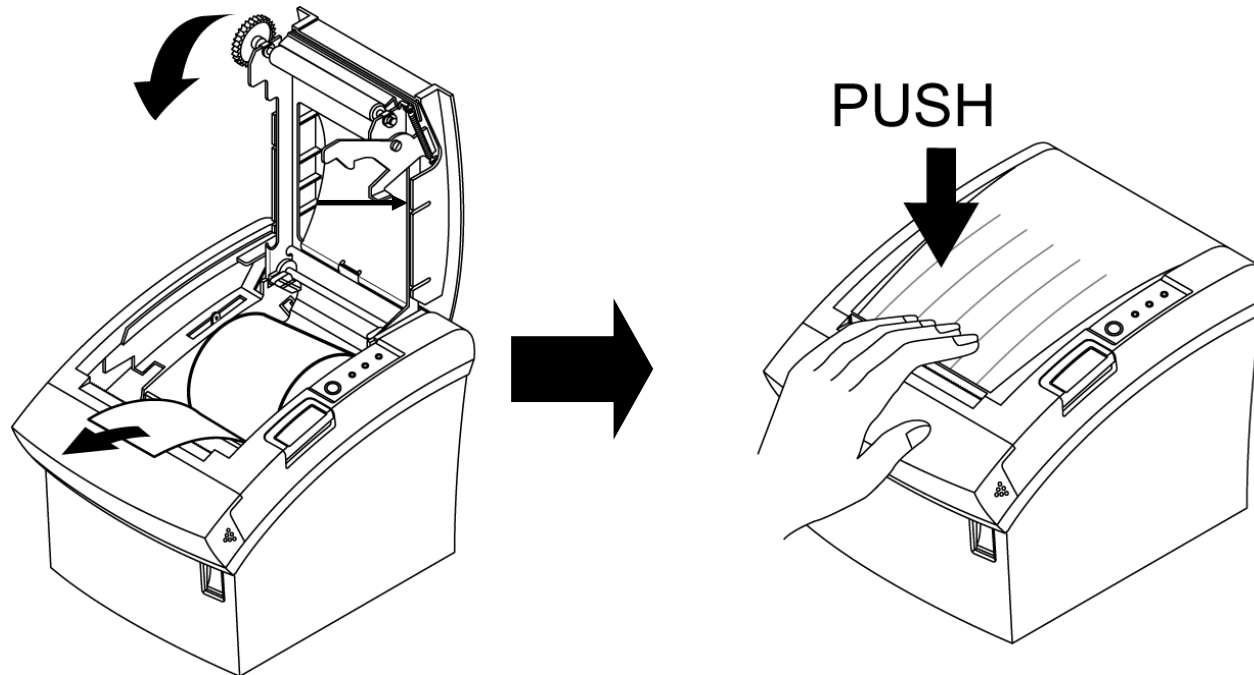
Ticketing
-Automatic ticketing,
Parking ticketing



Lottery
-Kiosk ticket printing,
Barcode printing

Hardware Highlights

1. 150 mm/sec high-speed printing
2. A simple drop-in loading system

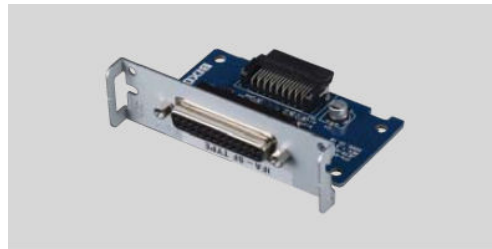


Hardware Highlights

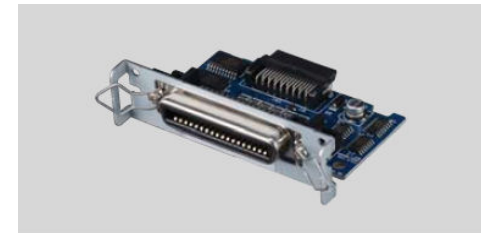
3. Various interface cards (RC-232C, RS-485, Parallel, USB, USB+Serial, 10/100 base-T)



IFA-S TYPE/IFD-S TYPE (RS-232C)



IFA-SF TYPE (RS-485)



IFA-P TYPE/IFD-P TYPE (IEEE-1284)



IFA-U TYPE (USB)



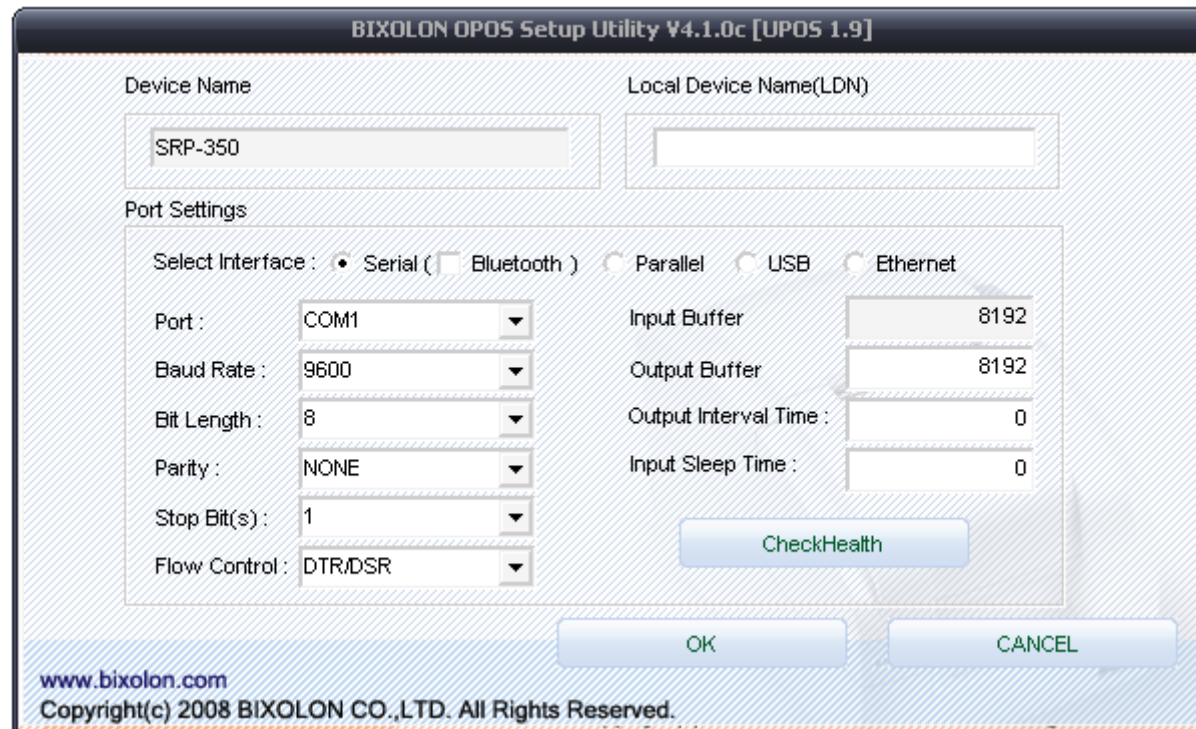
IFA-SU TYPE (USB + Serial)



IFA-E TYPE (Ethernet)

Software Highlights

1. Drivers are fully available for Windows 95/98/ME/NT4.0/XP/2003 server and OPOS



Options & Accessories

1. SMPS Built-in Cover

- You can save the space and prevent the SMPS from liquid by using RSB



2. Wall Mount

- Wall Mount is to install a printer on the wall to avoid too busy counter



3. Splash Cover

- Splash Cover is to prevent liquids and dust






4. Receipt Melody Box

- Receipt Melody Box passes the information to the noisy places.



Thermal printer Comparison table

Item	SRP-350	TM-T88III	TSP-700
Print method	Thermal line printing	Thermal line printing	Thermal line printing
Print speed	Max 150 mm/sec	Max 150 mm/sec	Max 180 mm/sec
Paper roll size	Max 83 mm	Max 83 mm	Max 83 mm
Dimensions	145(W) X 195(D) X 146(H)	145(W) X 195(D) X 148(H)	147(W) X 213(D) X 148(H)
Interface	*S/ P/U/E/PU	*S/P/U/E	*S/P/U/E/Wireless
Paper loading	Clam-shell	Clam-shell	Clam-shell
Cutter	Tear-bar, auto cutter	Auto cutter	Tear-bar, auto cutter
Price	Competitive	High	High
			

* S : Serial, P : Parallel, U : USB, E : Ethernet, PU: powered USB

SRP-350 Specification

PRINT	PRINT METHOD WIDTH PRINT SPEED RESOLUTION PAPER SUPPLY METHOD CHARACTER SIZES CHARACTER PER LINE SENSOR	Direct Thermal Printing 3-inch 150mm/sec 180 DPI Easy Paper Loading Font A : 12 X 24/ Font B : 9 X 17 Font A:42 / Font B:56 Paper near end sensor, Paper end sensor, Cover open sensor
PAPER ROLL	WIDTH DIAMETER	80mm (79.5 ± 0.5mm) -> Thermal Paper Max. Ø 83.0mm
BARCODES		1D : EAN-13, EAN-8, Code 39, Code 93, Code 128, ITF, Coda bar, UPC-A, UPC-E 2D : PDF417, QR Code
RELIABILITY	MCBF TPH	37,000,000 Lines 150 km
CONNECTIVITY	INTERFACE	RC-232C, IEEE-1284, RS-485, USB, Ethernet(10/100 base T)
POWER	SUPPLY	AC 100V~240V±10%(Include), DC 24V, 2.5A
RECEIVE BUFFER SIZE		4K Bytes
OPTION	CUTTER TYPE Options LANGUAGE	SRP-350C Type : Guillotine Wall mount blanket, Splash proof cover Buyer Language Support
DIMENSION		145(W) X 195(L), 146(H)mm

BIXOLON Thermal printer

SRP-350

Thank you !